

Testing/Placement Charts

To be valid, test scores must be less than two years old.

English

*Enrollment in ENC 1101 Freshman Composition I (the first college-level English course) requires college-level placement in both English and reading.

| Assessment | Score | Placement |
|--------------------------|-------------|--|
| ACT English Usage (W) | 16 or less | Take CPT Sentence Skills |
| | 17 or more | ENC 1101* |
| SAT Critical Reading (W) | 479 or less | Take CPT Sentence Skills |
| | 480 or more | ENC 1101* |
| CPT Sentence Skills (W) | 53 or less | ENC 0010 and ENC 0010L or ENC 0010C Followed by ENC 0012 and ENC 0012L or ENC 0012C |
| | 54 -82 | ENC 0012 and ENC 0012L or ENC 0012C |
| | 83 or more | ENC 1101* |

Reading

*Enrollment in ENC 1101 Freshman Composition I (the first college-level English course) requires college-level placement in both English and reading.

| Assessment | Score | Placement |
|--------------------------|-------------|--|
| ACT Reading (R) | 19 or less | Take CPT Reading |
| | 20 or more | ENC 1101* |
| SAT Critical Reading (R) | 479 or less | Take CPT Reading |
| | 480 or more | ENC 1101* |
| CPT Reading Skills (R) | 59 or less | REA 0001 and REA 0001L or REA 0001C Followed by REA 0002 and REA 0002L or REA 0002C |
| | 60 -82 | REA 0002 and REA 0002L or REA 0002C |
| | 83 or more | ENC 1101* |

College-Preparatory Credit

Credits

| | | |
|-------------------------------------|--|---|
| ENC 0010 and ENC 0010L or ENC 0010C | College-Preparatory English I and Lab | 3 |
| ENC 0012 and ENC 0012L or ENC 0012C | College-Preparatory English II and Lab | 3 |
| REA 0001 and REA 0001L or REA 0001C | College-Preparatory Reading I and Lab | 3 |
| REA 0002 and REA 0002L or REA 0002C | College-Preparatory Reading II and Lab | 3 |

College-Level Credit

Credits

| | | |
|----------|------------------------|---|
| ENC 1101 | Freshman Composition I | 3 |
|----------|------------------------|---|

Mathematics

| Assessment | Score | Placement |
|---|--|--|
| ACT Mathematics (M) | 18 or less 19-20 21 or more | Take CPT Algebra MAT 1033C MAC 1105 or MGF 1106 or MGF 1107 or MTG 2204 (Take CPT-I for possible higher placement.) |
| SAT Mathematics (M) | 439 or less 440-499 500 or more | Take CPT Algebra MAT 1033C MAC 1105 or MGF 1106 or MGF 1107 or MTG 2204 (Take CPT-I for possible higher placement.) |
| CPT Arithmetic (M) | 71 or less 72 or more | MAT 0012C MAT 0020C |
| CPT Elementary Algebra (A) | 41 or less 42- 71 72 – 89 90 or more | MAT 0012C (Take CPT-M for possible placement in MAT 0020C.) MAT 0024C MAT 1033C MAC 1105 or MGF 1106 or MGF 1107 or MTG 2204 (Take CPT-I for possible higher placement.) |
| CPT College-Level Math (I) (To take CPT-I requires a minimum CPT-A score of 90 or a minimum ACT score of 21 or a minimum SAT score of 500) | 64 or less 65 or more 77 or more 89 or more | MAC 1105 or MGF 1106 or MGF 1107 or MTG 2204 MAC 1114 or MAC 1140 or MAC 2233 or MAE 2801 or MAT 2930 or MHF 2300 or MTG N001 or STA 2023 or STA 2930 MAC 1147 MAC 2311 |

College-Preparatory Credit

Credits

| | | |
|-----------|---|---|
| MAT 0012C | Pre-Algebra and Lab | 3 |
| MAT 0020C | Preparatory Mathematics Intensive and Lab | 4 |
| MAT 0024C | Beginning Algebra and Lab | 3 |

College-Level Elective Credit

Credits

| | | |
|-----------|-------------------------------|---|
| MAE 2801 | Elementary School Mathematics | 3 |
| MAT 1033C | Intermediate Algebra | 3 |

College-Level Gordon Rule Mathematics Credit

Credits

| | | |
|----------|--|---|
| MAC 1105 | College Algebra | 3 |
| MAC 1114 | College Trigonometry | 3 |
| MAC 1140 | Precalculus Algebra | 3 |
| MAC 1147 | Precalculus | 5 |
| MAC 2233 | Calculus for Business and Social Science | 3 |
| MAC 2311 | Calculus with Analytic Geometry I | 5 |
| MGF 1106 | College Mathematics | 3 |
| MGF 1107 | Mathematics for the Liberal Arts | 3 |
| MHF 2300 | Logic and Proof in Mathematics | 3 |
| MTG 2204 | Informal Geometry | 3 |
| STA 2023 | Statistical Methods | 3 |

English as a Second Language for Academic Purposes (EAP)

IMMIGRANTS, REFUGEES AND U.S. CITIZENS who do not speak English as a native language may begin entry assessment with the CPTs, ACT or SAT.

| Assessment | | Score | Level Placement | | |
|----------------|----------------|------------------|-----------------|--|-------------|
| LOEP and Essay | | 65 or less | Level 0 | Admission delayed; referral to Adult Education ESOL EAP 0281 EAP 0300, 0320, 0340, 0360 EAP 0400, 0420, 0440, 0460 EAP 1500, 1520, 1540, 1560 EAP 1620, 1640; EAP 1616 is optional. Use CPT, ACT or SAT for English and Reading placements (not EAP) | |
| | | 66 - 75 | Level 2 | | |
| | | 76 - 85 | Level 3 | | |
| | | 86 - 95 | Level 4 | | |
| | | 96 - 105 | Level 5 | | |
| | | 106 - 115 | Level 6 | | |
| | | 116 or more | Level 7 | | |
| TOEFL | Internet Based | Computer Version | Paper Version | Take LOEP for placement EAP 0400, 0420, 0440, 0460 EAP 1500, 1520, 1540, 1560 EAP 1620, 1640; EAP 1616 is optional. Use CPT, ACT or SAT for English and Reading placements (not EAP) | |
| | | 44 or less | 132 or less | | 449 or less |
| | | 45 - 53 | 133 - 156 | | 450 - 479 |
| | | 54 - 63 | 157 - 179 | | 480 - 509 |
| | | 64 - 70 | 180 - 196 | | 510 - 529 |
| | | 71 or more | 197 or more | | 530 or more |

NONIMMIGRANTS (INTERNATIONAL STUDENTS) who do not speak English as a native language must submit a satisfactory score on the LOEP and Essay or TOEFL.

| Assessment | | Score | Level Placement | | |
|----------------|----------------|------------------|-----------------|---|-------------|
| LOEP and Essay | | 65 - 85 | Levels 0, 2, 3 | Not eligible for admission to Valencia EAP 0400, 0420, 0440, 0460 EAP 1500, 1520, 1540, 1560 EAP 1620, 1640; EAP 1616 is optional. Use CPT, ACT or SAT for English and Reading placements (not EAP) | |
| | | 86 - 95 | Level 4 | | |
| | | 96 - 105 | Level 5 | | |
| | | 106 - 115 | Level 6 | | |
| | | 116 or more | Level 7 | | |
| TOEFL | Internet Based | Computer Version | Paper Version | Not eligible for admission to Valencia EAP 0400, 0420, 0440, 0460 EAP 1500, 1520, 1540, 1560 EAP 1620, 1640; EAP 1616 is optional. Use CPT, ACT or SAT for English and Reading placements (not EAP) | |
| | | 44 or less | 132 or less | | 449 or less |
| | | 45 - 53 | 133 - 156 | | 450 - 479 |
| | | 54 - 63 | 157 - 179 | | 480 - 509 |
| | | 64 - 70 | 180 - 196 | | 510 - 529 |
| | | 71 or more | 197 or more | | 530 or more |

College-Preparatory Credit

Credits

| | | |
|----------|---|---|
| EAP 0281 | High Beginning Combined Skills for Non-Native Speakers of English | 6 |
| EAP 0300 | Low Intermediate Speech for Non-Native Speakers of English | 3 |
| EAP 0320 | Low Intermediate Reading for Non-Native Speakers of English | 3 |
| EAP 0340 | Low Intermediate Composition for Non-Native Speakers of English | 3 |
| EAP 0360 | Low Intermediate Structure for Non-Native Speakers of English | 3 |
| EAP 0400 | Intermediate Speech for Non-Native Speakers of English | 3 |
| EAP 0420 | Intermediate Reading for Non-Native Speakers of English | 3 |
| EAP 0440 | Intermediate Composition for Non-Native Speakers of English | 3 |
| EAP 0460 | Intermediate Structure for Non-Native Speakers of English | 3 |

College-Level Elective Credit

Credits

| | | |
|--|--|---|
| A maximum of 12 credits from these courses can be applied toward an associate degree. | | |
| EAP 1500 | High Intermediate Speech for Non-Native Speakers of English | 3 |
| EAP 1520 | High Intermediate Reading for Non-Native Speakers of English | 3 |
| EAP 1540 | High Intermediate Composition for Non-Native Speakers of English | 3 |
| EAP 1560 | High Intermediate Structure for Non-Native Speakers of English | 3 |
| EAP 1616 | Advanced Speech for Non-Native Speakers of English | 3 |
| EAP 1620 | Advanced Reading for Non-Native Speakers of English | 3 |
| EAP 1640 | Advanced Composition for Non-Native Speakers of English | 3 |

College-Preparatory Courses in Reading, Mathematics, and English

College-preparatory courses help students attain basic skills in reading, English, and mathematics so that they have a better chance at success in college-level courses. Valencia offers college-preparatory courses in reading, mathematics, English, and English as a second language for academic purposes. College-preparatory courses do not apply toward an associate degree or technical certificate.

For course level placement, which is based on entry testing, each of the three skill areas of reading, English and mathematics are independent of each other. You may place at the college level in one area(s) and at the college-preparatory level in the other area(s). If your skills are below the levels defined by the Florida Department of Education as required for successful performance in a college-credit program and you are degree-seeking, you will be required to enroll in college-preparatory courses at the beginning of your enrollment and continue to enroll in them each term until you have completed your required courses.

Reading

| | |
|----------|--|
| REA 0001 | College-Preparatory Reading I and Lab (REA 0001L) or class and lab combined (REA 0001C) |
| REA 0002 | College-Preparatory Reading II and Lab (REA 0002L) or class and lab combined (REA 0002C) |

Mathematics

| | |
|-----------|---|
| MAT 0012C | Pre-Algebra and Lab |
| MAT 0020C | Preparatory Mathematics Intensive and Lab |
| MAT 0024C | Beginning Algebra and Lab |

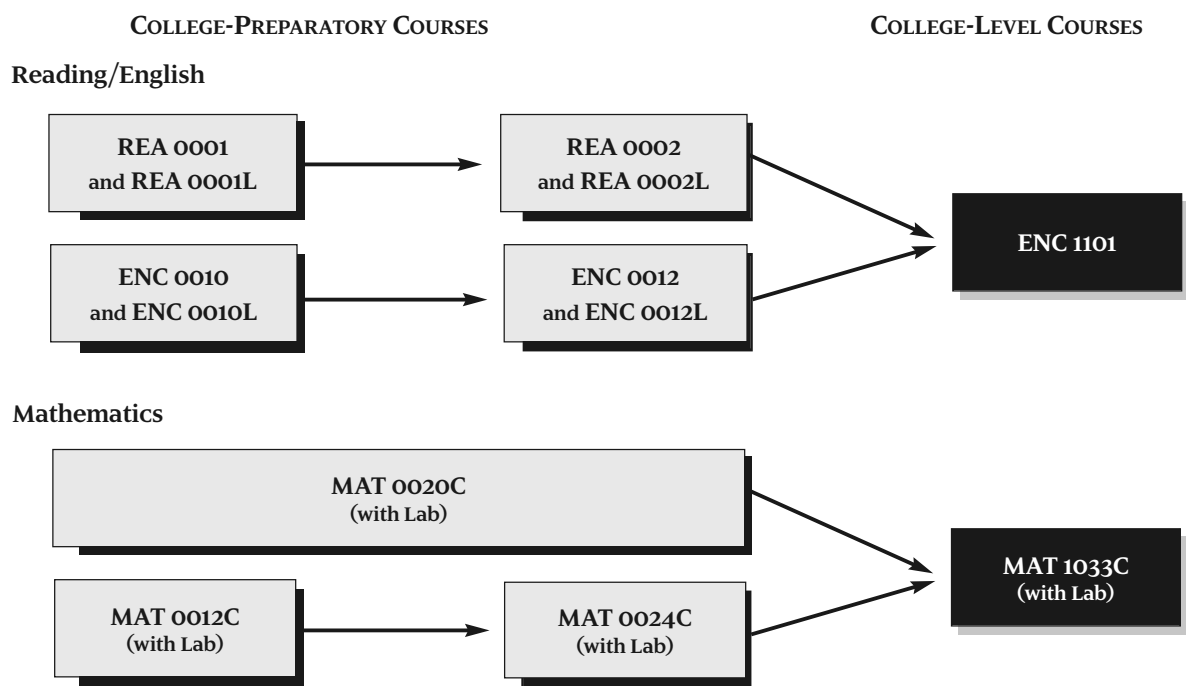
English

| | |
|----------|--|
| ENC 0010 | College-Preparatory English I and Lab (ENC 0010L) or class and lab combined (ENC 0010C) |
| ENC 0012 | College-Preparatory English II and Lab (ENC 0012L) or class and lab combined (ENC 0012C) |

A college-preparatory sequence consists of the two college-preparatory courses in the same area such as College-Preparatory Reading I and College-Preparatory Reading II. Your CPT scores determine your starting course in a sequence.

As long as you are enrolled in the appropriate college-preparatory courses, as indicated on the Mandatory Courses Completion Chart, you may enroll in college-level courses for which you have the prerequisite(s). At times, college-preparatory courses are paired with college-level courses for an enhanced learning experience called LINC. (See LINC entry in Educational Enhancements section of this catalog.)

Preparatory Flow Chart



Courses in English as a Second Language for Academic Purposes (EAP)

Valencia offers college-preparatory and college-level courses in English for Academic Purposes (EAP) in speaking/ listening, reading, writing, and the structure of the English language for non-native speakers of English.

College-Preparatory EAP

- Level 2**
EAP 0281 High Beginning Combined Skills
- Level 3**
EAP 0300 Low Intermediate Speech
EAP 0320 Low Intermediate Reading
EAP 0340 Low Intermediate Composition
EAP 0360 Low Intermediate Structure
- Level 4**
EAP 0400 Intermediate Speech
EAP 0420 Intermediate Reading
EAP 0440 Intermediate Composition
EAP 0460 Intermediate Structure

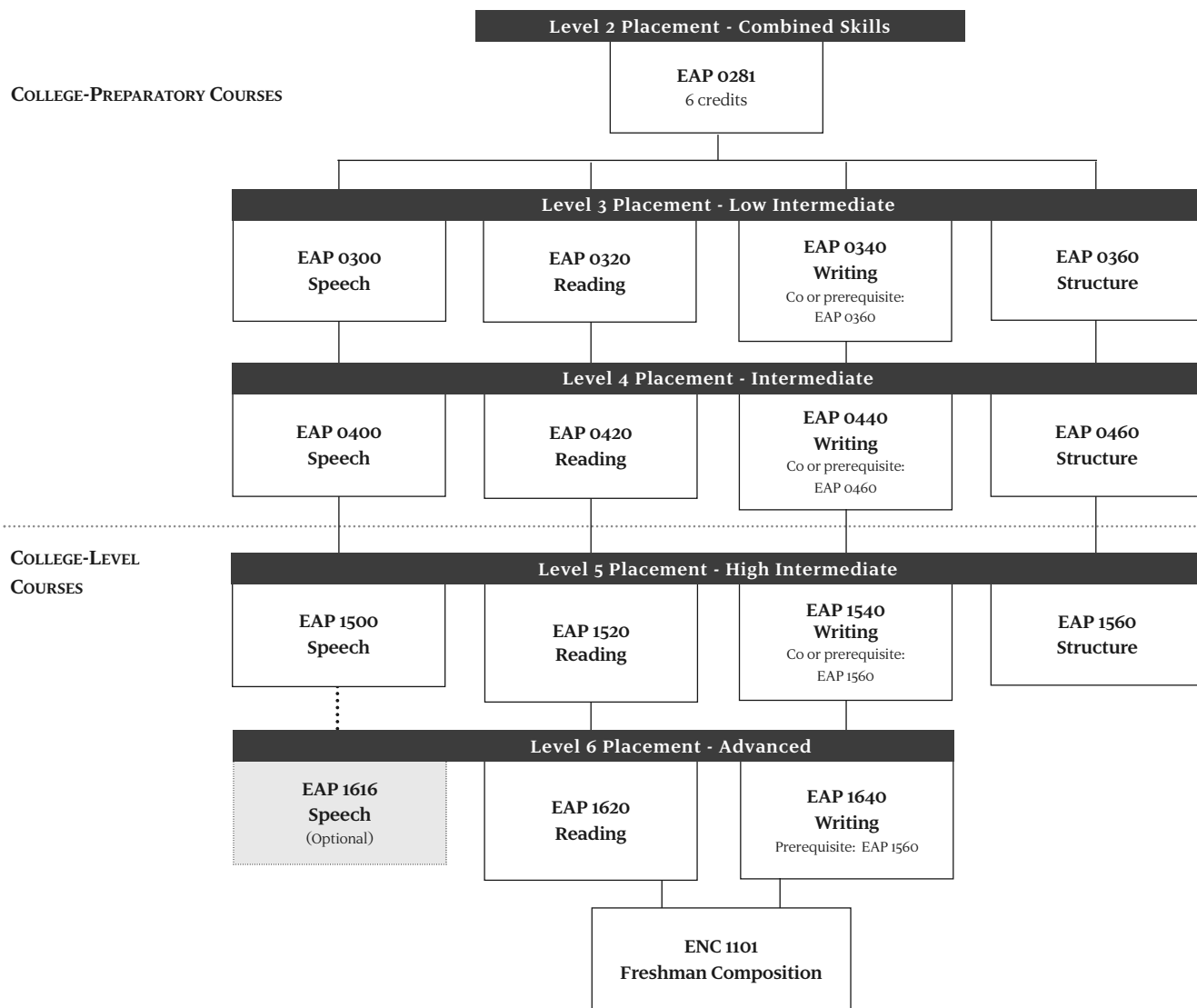
College-Level EAP

- Level 5**
EAP 1500 High Intermediate Speech
EAP 1520 High Intermediate Reading
EAP 1540 High Intermediate Composition
EAP 1560 High Intermediate Structure
- Level 6**
EAP 1620 Advanced Reading
EAP 1640 Advanced Composition

A maximum of 12 credits from EAP college-level courses can be applied as elective credit toward an associate degree.

Mandatory Courses Completion Chart English as a Second Language for Academic Purposes (EAP)

English Language Proficiency Assessment (LOEP and Essay or TOEFL) is used for initial placement level. Degree-seeking students required to enroll in EAP courses at Valencia must enroll in them each term until all required EAP courses have been completed successfully.



Requirements for Passing All College-Preparatory and EAP Courses

Each college-preparatory course and each English for Academic Purposes (EAP) course must be completed with a grade of C or better for successful completion and/or to advance to the next level of course work.

The **Basic Skills Exit Test** is the state-mandated test required for students who do not place at the college level in mathematics and/or the level of ENC 1101 Freshman Composition on entry testing at Valencia. The Basic Skills Exit Test is a component of the college-preparatory courses in mathematics (MAT 0020C and MAT 0024C), English (ENC 0012), and reading (REA 0002), and the exit-level EAP courses (EAP 1620 and EAP 1640).

To pass these exit-level courses, you must have successful completion of all course requirements and a passing score on the corresponding Basic Skills Exit Test. If you do not pass the Basic Skills Exit Test in mathematics, you must re-enroll in college-preparatory mathematics (Florida Statute 1008.30).

If you successfully complete the course work but do not pass the Basic Skills Exit Test for reading (REA 0002 or REA 0002C or EAP 1620) or for writing (ENC 0012 or ENC 0012C or EAP 1640), you must re-enroll in the same course or, if you are recommended by your professor, you may enroll in an Intensive Tutorial (ENC 0012N or REA 0002N). Students are eligible for ENC 0012N Intensive English Tutorial after their first attempt in ENC 0012 or ENC 0012C or EAP 1640. Students are eligible for REA 0002N Intensive Reading Tutorial after their first attempt in REA 0002 or REA 0002C or EAP 1620. Students recommended for a Tutorial will receive a grade of Incomplete in the exit-level course. To be registered in the Tutorial, the student will sign a contract with the Academic Dean and work with assigned instructors to prepare for the Basic Skills Exit Test.

Limitation on Attempts in a Course

State Rule permits only three attempts at Valencia to pass the same course. The same course usually means the course number is the same when posted on a Valencia transcript. For example, you have only three attempts to pass REA 0001 College-Preparatory Reading I with a grade of C or better. For further information on attempts, see the "Course Attempts, Course Withdrawal, Course Repeats and Grade Forgiveness" entry in the Academic Policies section of this catalog.

Mandatory Courses

Mandatory Courses are courses in college-preparatory reading, mathematics and English; English for Academic Purposes; and Student Success which, a student may be "mandated" to take and complete successfully. Based on his/her entry test scores, a student may not be required to take any of the listed Mandatory Courses or may be "mandated" into one or more of the courses; students who place in college-preparatory reading, mathematics, and English must complete successfully SLS 1122 Student Success.

The following are Mandatory Courses:

College-Preparatory

EAP 0281 High Beginning Combined Skills

EAP 0300 Low Intermediate Speech
EAP 0320 Low Intermediate Reading
EAP 0340 Low Intermediate Composition
EAP 0360 Low Intermediate Structure

EAP 0400 Intermediate Speech
EAP 0420 Intermediate Reading
EAP 0440 Intermediate Composition
EAP 0460 Intermediate Structure

ENC 0010 College-Preparatory English I
ENC 0012 College-Preparatory English II

MAT 0012C Pre-Algebra
MAT 0020C Preparatory Mathematics
Intensive
MAT 0024C Beginning Algebra

REA 0001 College-Preparatory Reading I
REA 0002 College-Preparatory Reading II

College-Level

EAP 1500 High Intermediate Speech
EAP 1520 High Intermediate Reading
EAP 1540 High Intermediate Composition
EAP 1560 High Intermediate Structure

EAP 1620 Advanced Reading
EAP 1640 Advanced Composition

SLS 1122 Student Success

Requirements for Completing Mandatory Courses

If you are a degree-seeking student and, based on entry testing, you place in one or more Mandatory Courses, you will be required to enroll in the course or courses at the beginning of your enrollment and continue to enroll in them each term until you have completed them successfully. You must comply with the rules for completing your required Mandatory Courses as described in the chart that follows.

If you are a degree-seeking student and, based on scores on the LOEP and Essay or TOEFL, you place in English as a Second Language for Academic Purposes (EAP) courses, you will be required to enroll in the courses when you begin at Valencia and continue to enroll in them each term until you have completed your Mandatory EAP courses. (See EAP Completion Chart in this catalog section.)

If you are a non-degree-seeking student (enrolled in a Technical Certificate program, as a transient student, for teacher recertification, for job improvement or for personal interest), you are not required to take a college-preparatory course(s) unless needed as a prerequisite(s) for a specific course.

Mandatory Courses Completion Chart College-Preparatory and Student Success Courses

This chart indicates the courses in which you must enroll based on your assessment results which specifies your Mandatory Course requirement(s) and the number of courses in which you enroll each term. These courses are corequisites for enrollment in most other courses. Once you begin a Mandatory Course, you must continue to enroll in that department until you have satisfied your Mandatory Course requirements in that department. SLS 1122 is the Student Success course.

| Requirement | Enrolling in 1 course | Enrolling in 2 courses | Enrolling in 3 or more courses |
|--------------------------------------|-------------------------------------|---|---|
| Reading only | Must enroll in Reading | Must enroll in Reading. Can enroll in any other course for which you have the prerequisite(s) (SLS 1122 suggested). | Must enroll in Reading. Can enroll in any other course(s) for which you have the prerequisite(s) (SLS 1122 suggested). |
| Math only | Must enroll in Math or SLS 1122. | Must enroll in Math. Can enroll in any other course for which you have the prerequisite(s) (SLS 1122 suggested). | Must enroll in Math. Can enroll in any other course(s) for which you have the prerequisite(s) (SLS 1122 suggested). |
| English only | Must enroll in English or SLS 1122. | Must enroll in English. Can enroll in any other course for which you have the prerequisite(s) (SLS 1122 suggested). | Must enroll in English. Can enroll in any other course(s) for which you have the prerequisite(s) (SLS 1122 suggested). |
| Reading and Math | Must enroll in Reading | Must enroll in Reading and either Math or SLS 1122. | Must enroll in Reading and either Math or SLS 1122. Can enroll in any other course(s) for which you have the prerequisite(s). |
| Reading and English | Must enroll in Reading | Must enroll in Reading. Can enroll in any other course for which you have the prerequisite (SLS 1122 or English suggested). | Must enroll in Reading. Can enroll in any other course(s) for which you have the prerequisite(s) (SLS 1122 or English suggested). |
| Math and English | Must enroll in Math or SLS 1122. | Must enroll in Math and SLS 1122 or Math and English. | Must enroll in Math and English. Can enroll in any other course(s) for which you have the prerequisite(s) (SLS 1122 suggested). |
| Reading, SLS 1122, Math, and English | Must enroll in Reading | Must enroll in Reading and SLS 1122. | Must enroll in Reading, SLS 1122, and Math. Can enroll in any other course(s) for which you have the prerequisite(s) (English suggested). |