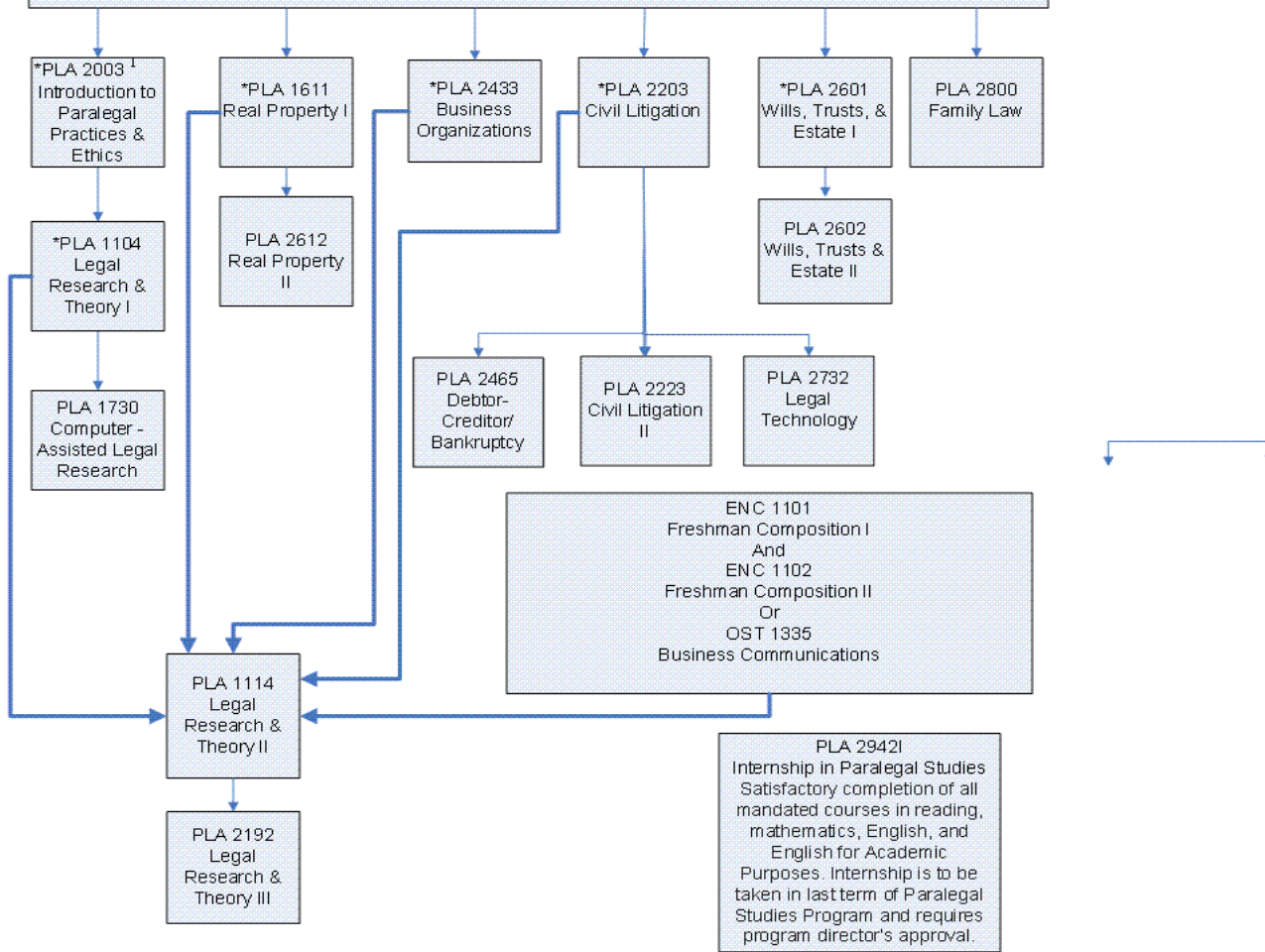


Paralegal Studies Prerequisite Chart

1/28/2009

All degree-seeking students must satisfy entry testing requirements and satisfactorily complete all Mandatory Courses in reading, student success, mathematics, English, and English for Academic Purposes in which the student is placed.



¹We strongly suggest that you take PLA 2003 in your first semester of the program.

* A minimum grade of a "C" is required in a prerequisite course for progression.