

Valencia Community College

Strategic Indicators Graphs 2008
Selected Trends and State Comparisons

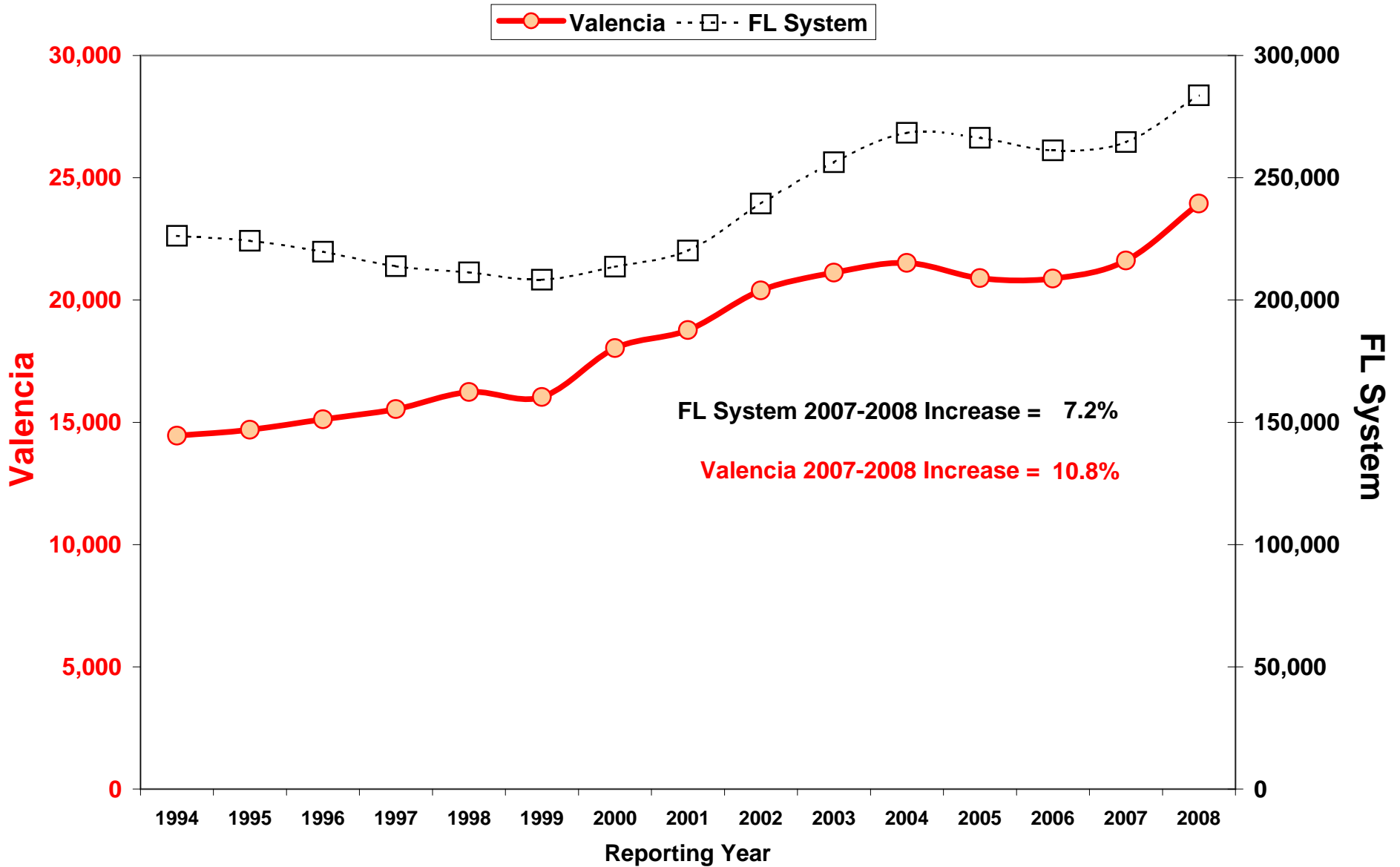
Institutional Research Department
June 24, 2008

Table of Contents

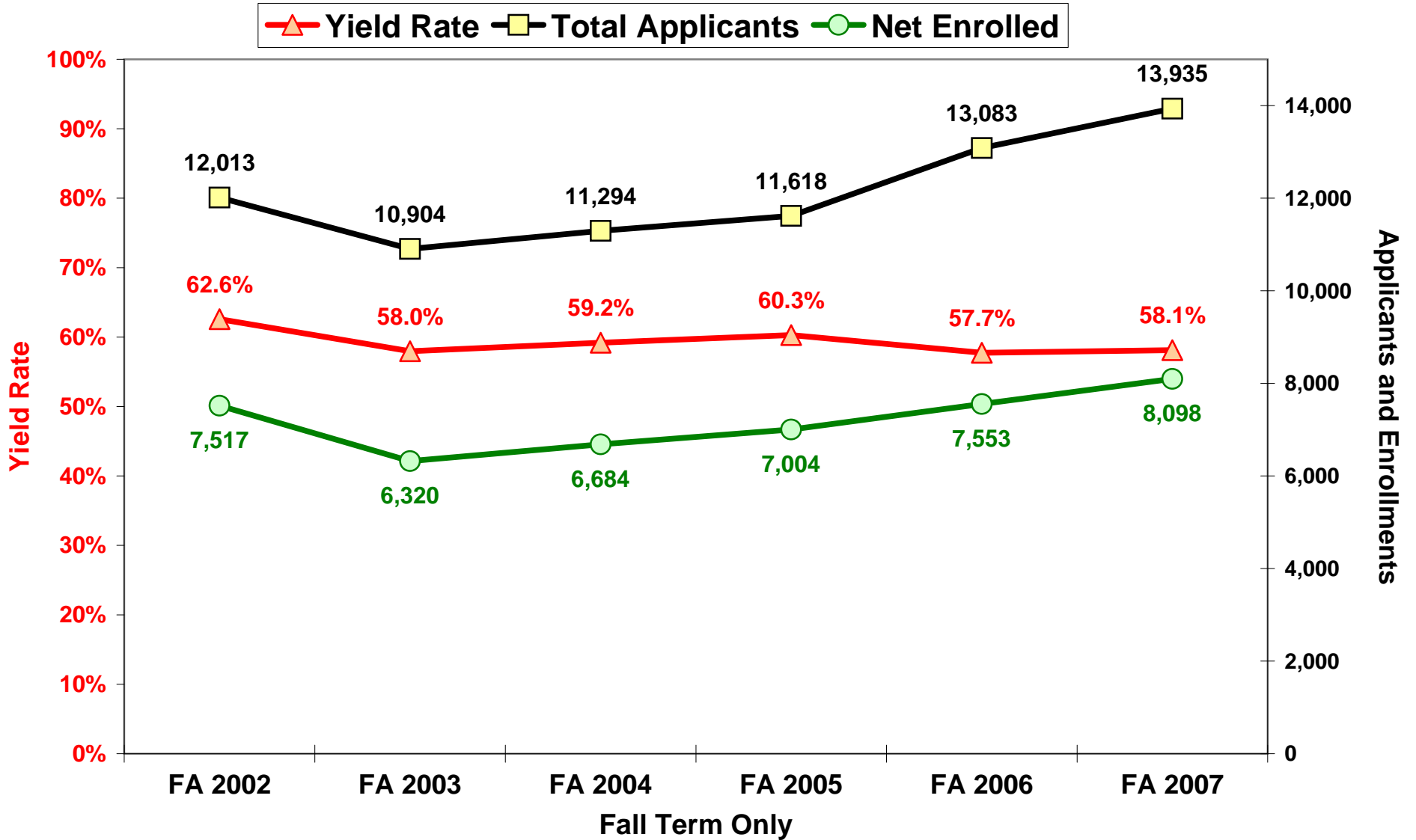
<u>Description</u>	<u>Page #</u>
FTE Enrollment by Year	3
Yield Rate: Applicants Converted to Credit Enrollments	4
% Share of Public High School Graduates	5
% Share of Public High School Graduates by Ethnicity	6
Credit Enrollments by Ethnic Mix	7
Fall Cohort Retention Rates	8
Retention of AA Degree Seekers over 4 Years	9
Mix of FTIC Degree-Seeking Students by Mandate Level	10
Successful Completion of College Prep: Reading	11
Successful Completion of College Prep: Writing	12
Successful Completion of College Prep: Math	13
AA Graduation Index	14
AA Graduation Index: Non-White Students	15
AA Graduation Index: Black Male Students	16
Cohort Analysis: Fall FTIC Degree-Seekers Tracked over 4 Years	17
GPA Performance of AA Degree Transfers to FL Public Universities	18
Valencia Transfer Students Attending FL Public Universities	19
Community College Transfer Students Attending UCF	19

FTE Enrollment by Year

For comparability, FL System data excludes Adult Education and other disciplines not taught at Valencia Community College.

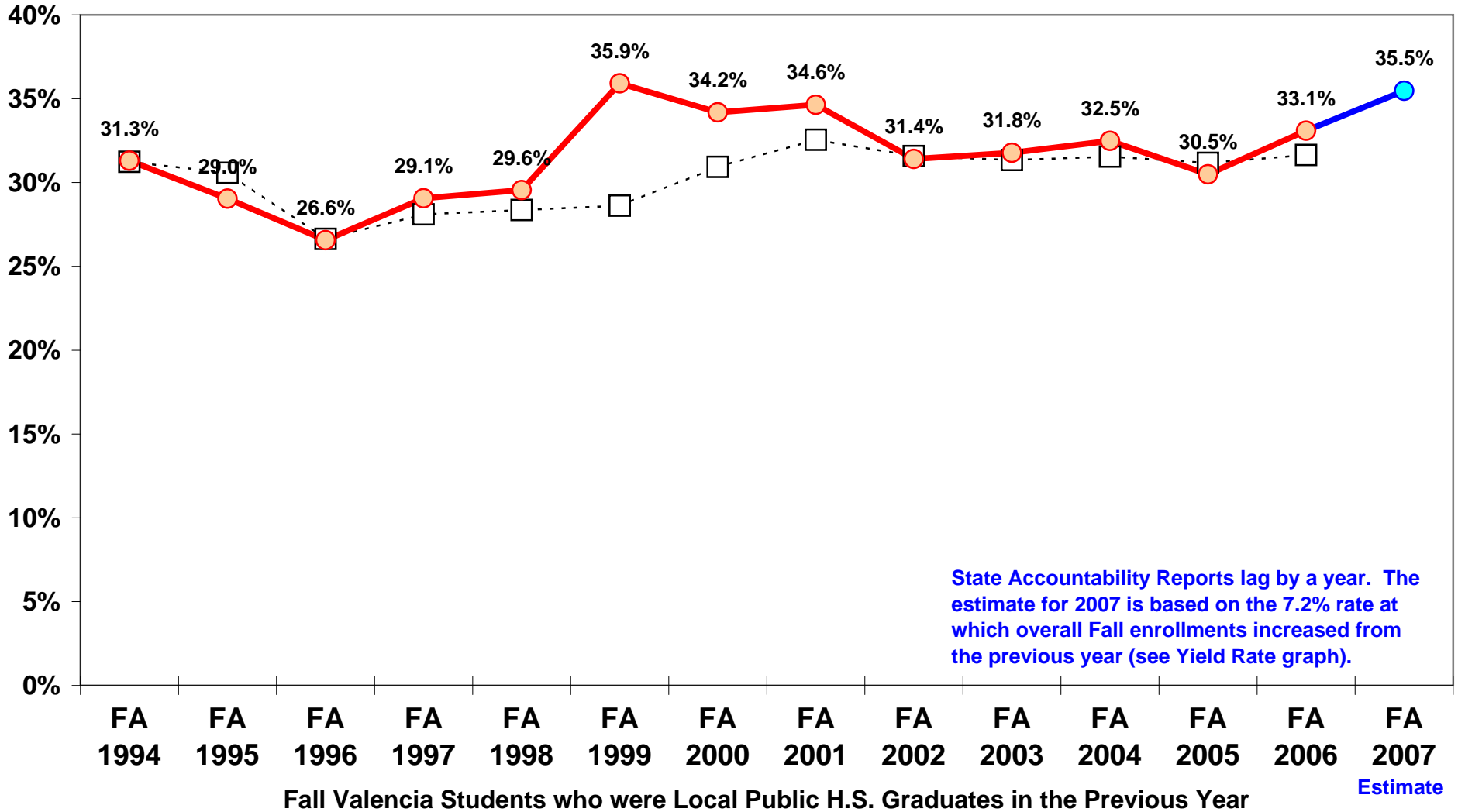


Yield Rate: Applicants Converted to Credit Enrollments



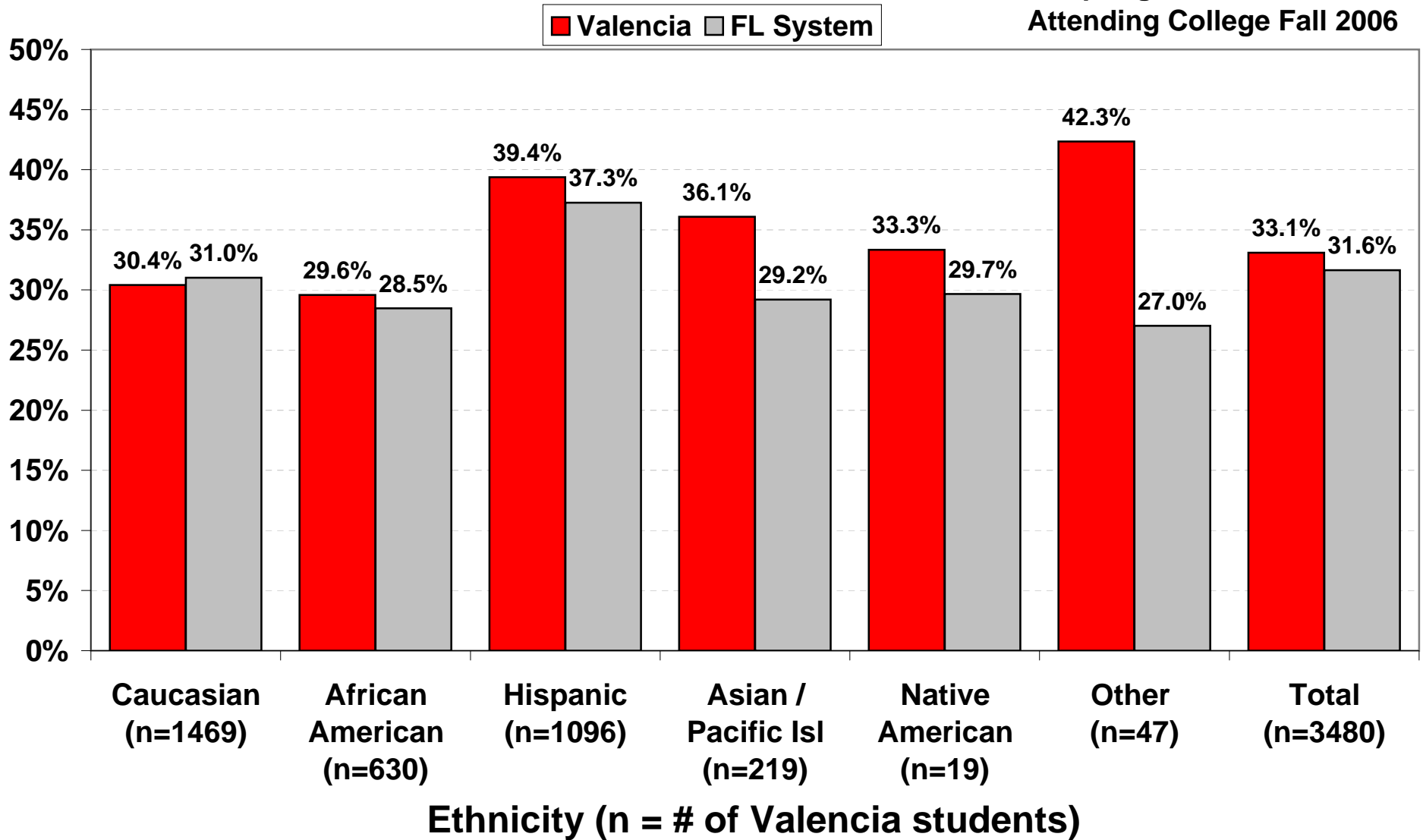
% Share of Public High School Graduates (Orange and Osceola Graduates Only)

---□--- FL System —●— Valencia

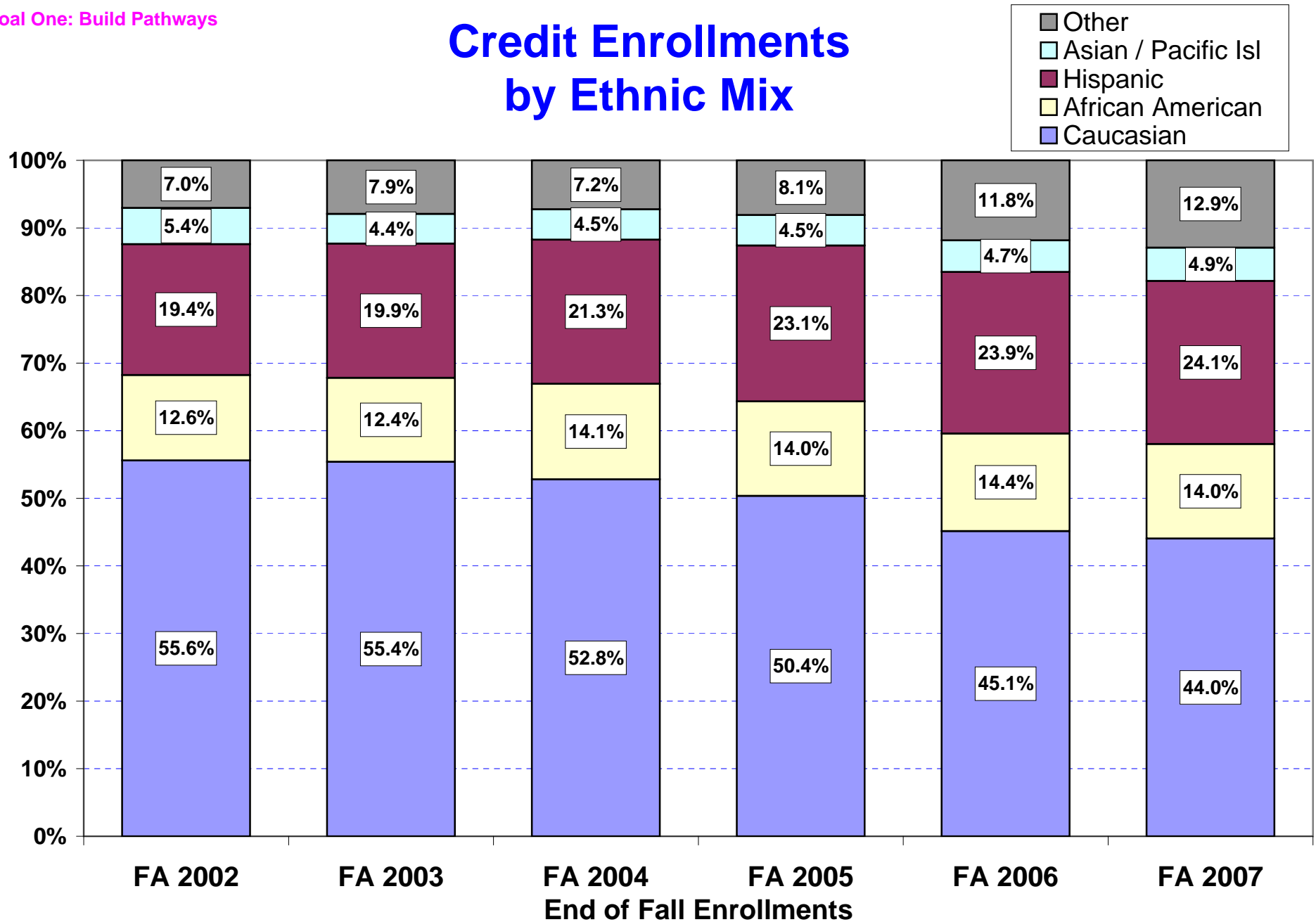


% Share of Public High School Graduates by Ethnicity

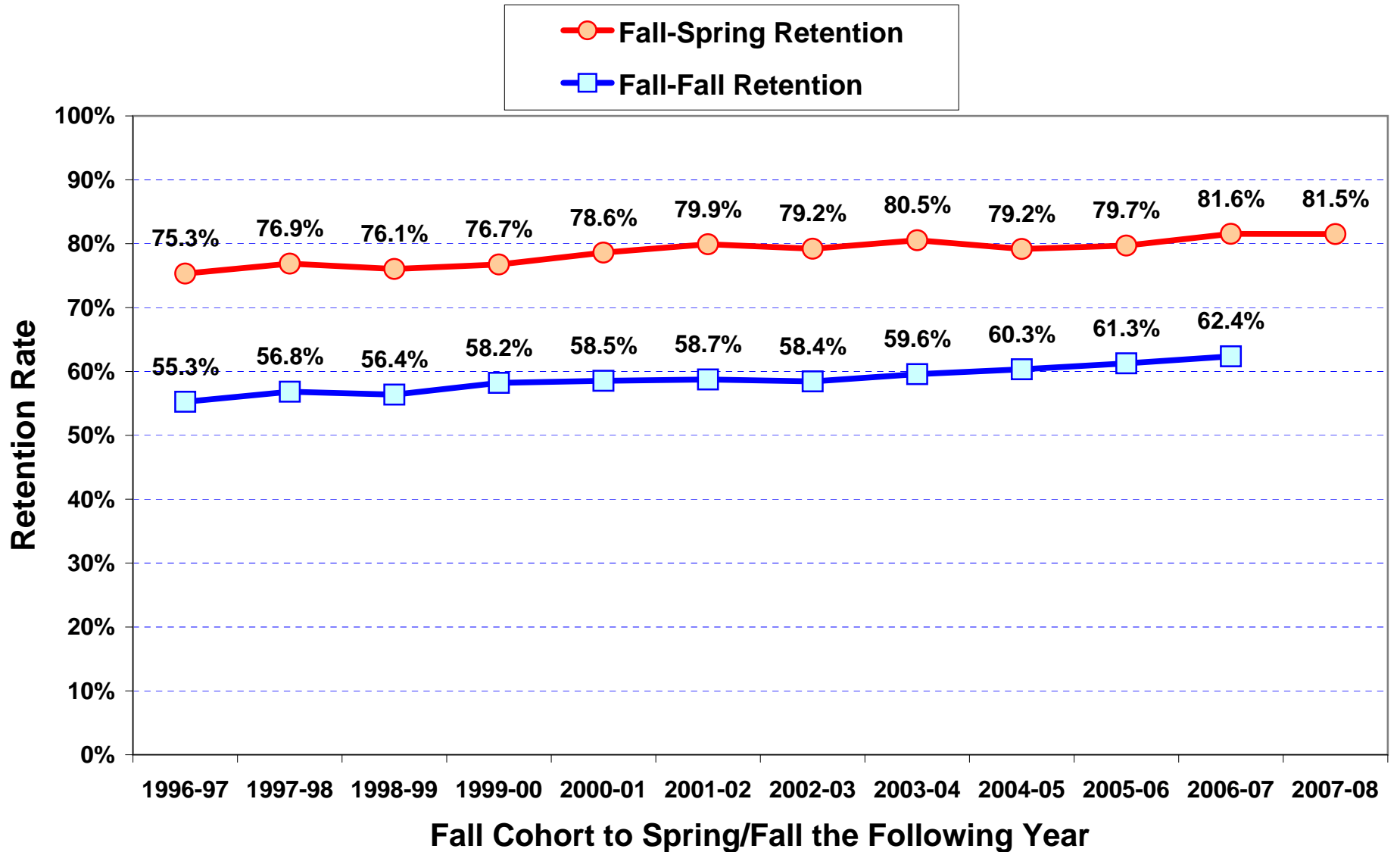
Spring 2006 HS Grads
Attending College Fall 2006



Credit Enrollments by Ethnic Mix

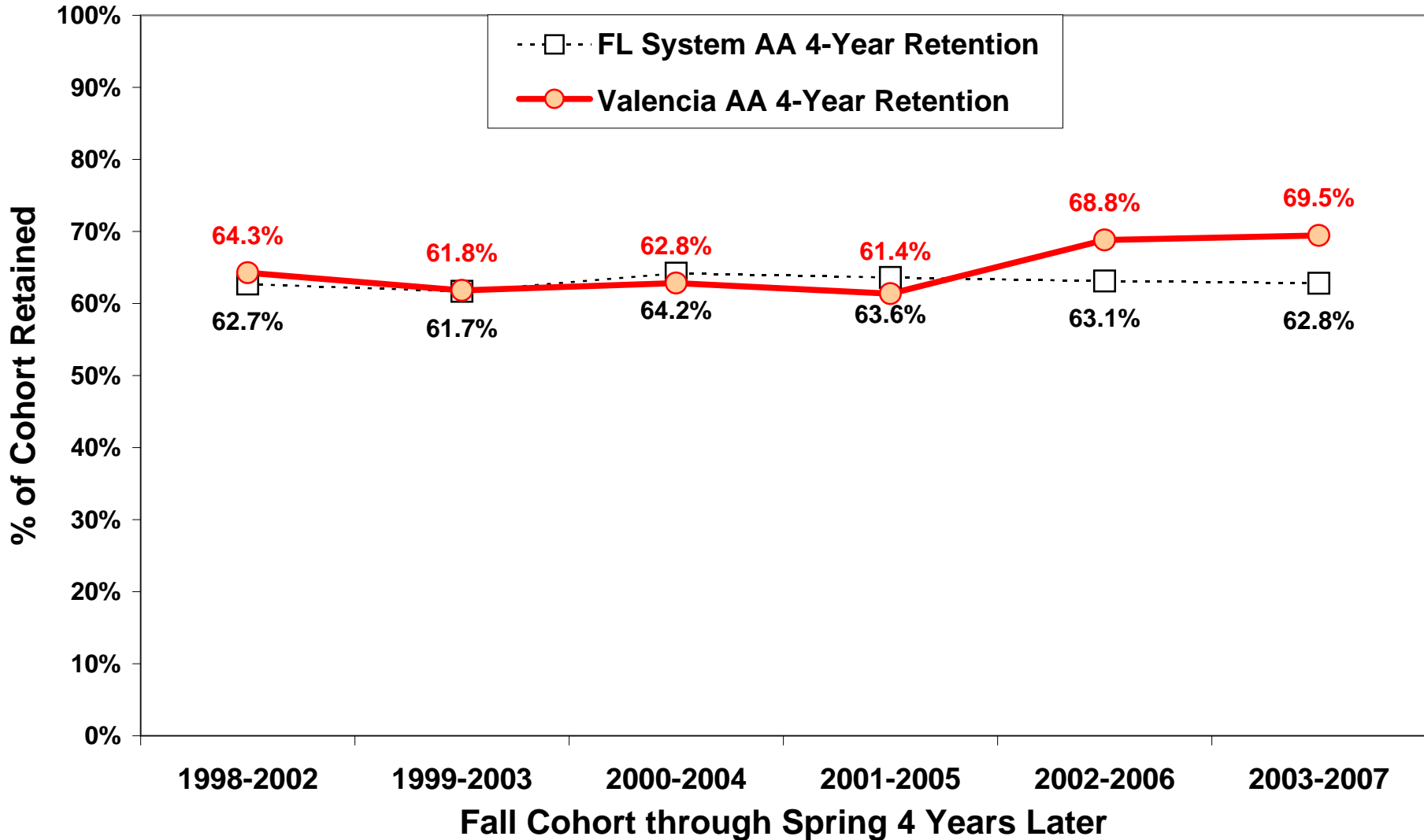


Fall Cohort Retention Rates FTIC Degree-Seeking Students

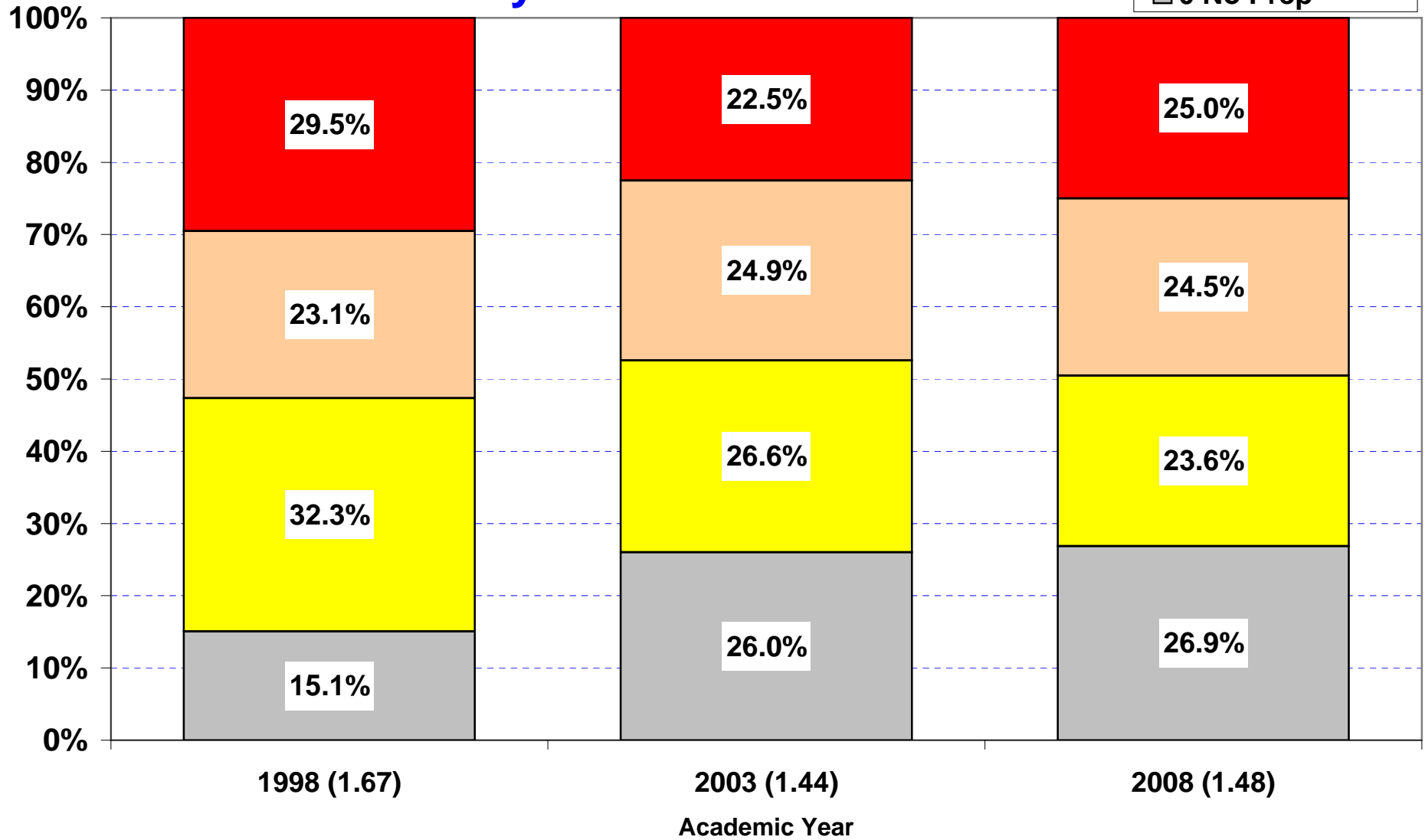


Retention of AA Degree Seekers over 4 Years

% Who Completed Their Degree or are Still Enrolled From Among Those in Cohort Who Completed 18+ Hours



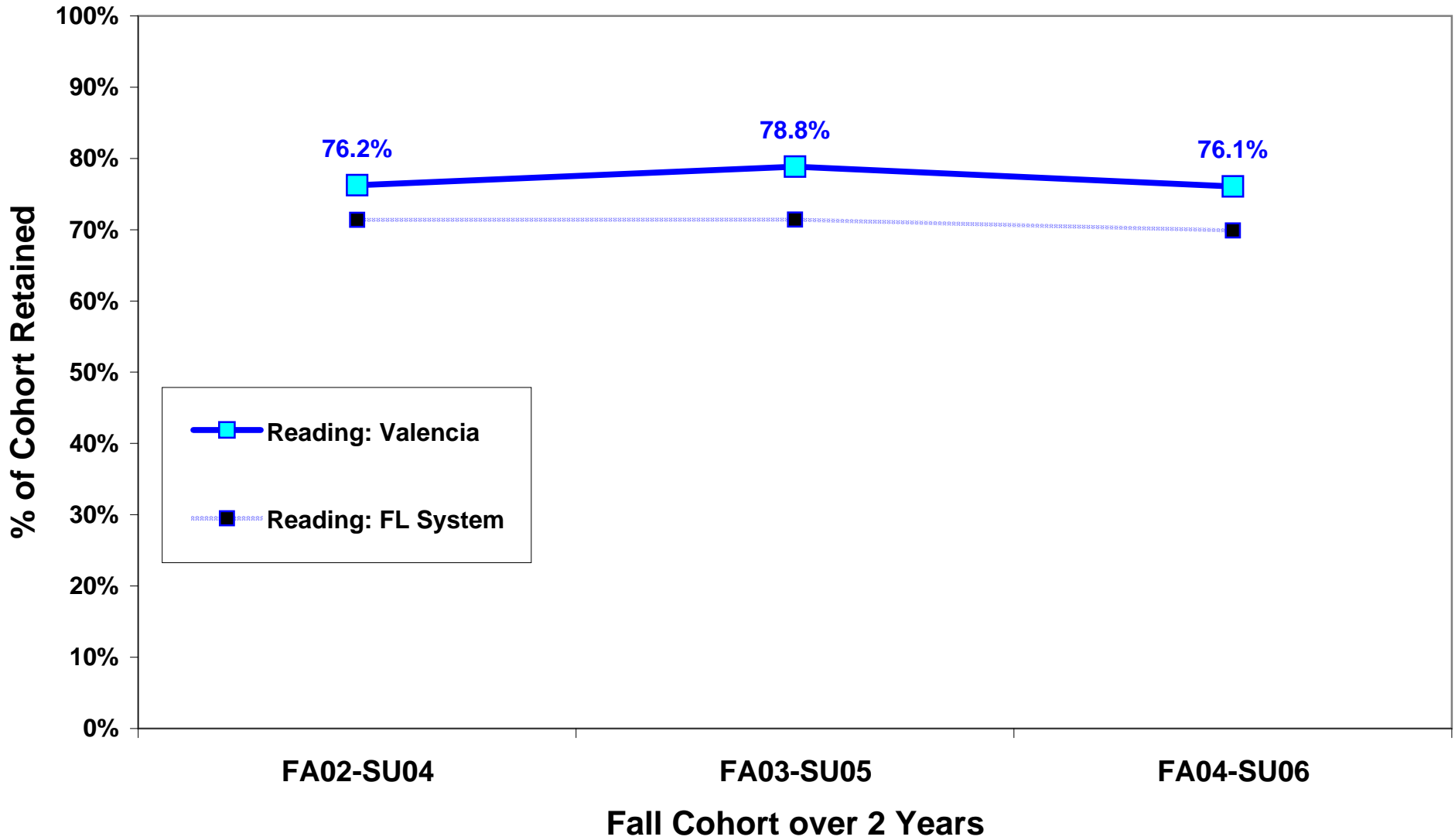
Mix of FTIC Degree-Seeking Students by Mandate Level



in parenthesis = average # of mandated courses per student

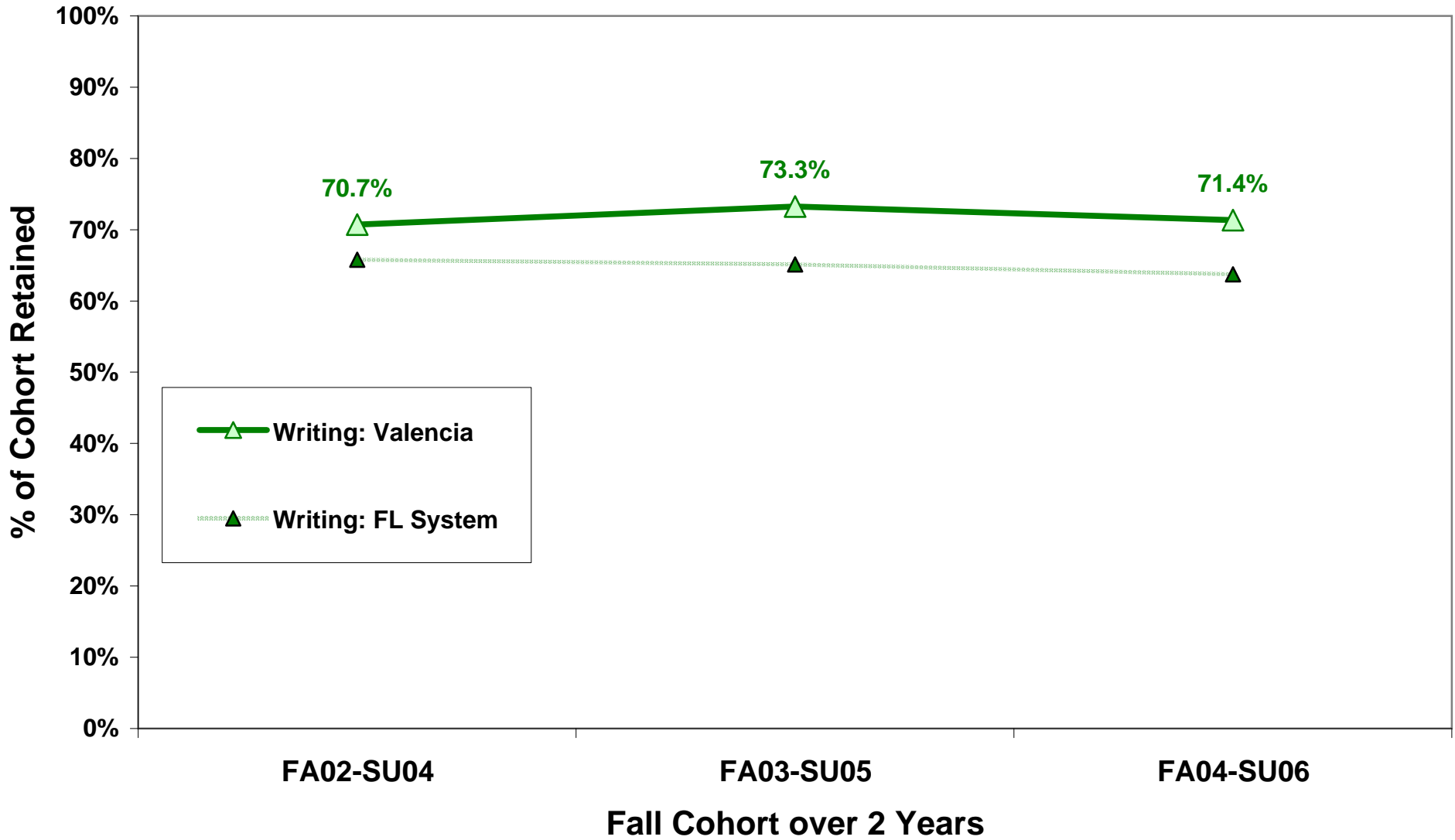
Successful Completion of College Prep: Reading

% Who Completed Their Preparatory Program Within 2 Full Academic Years



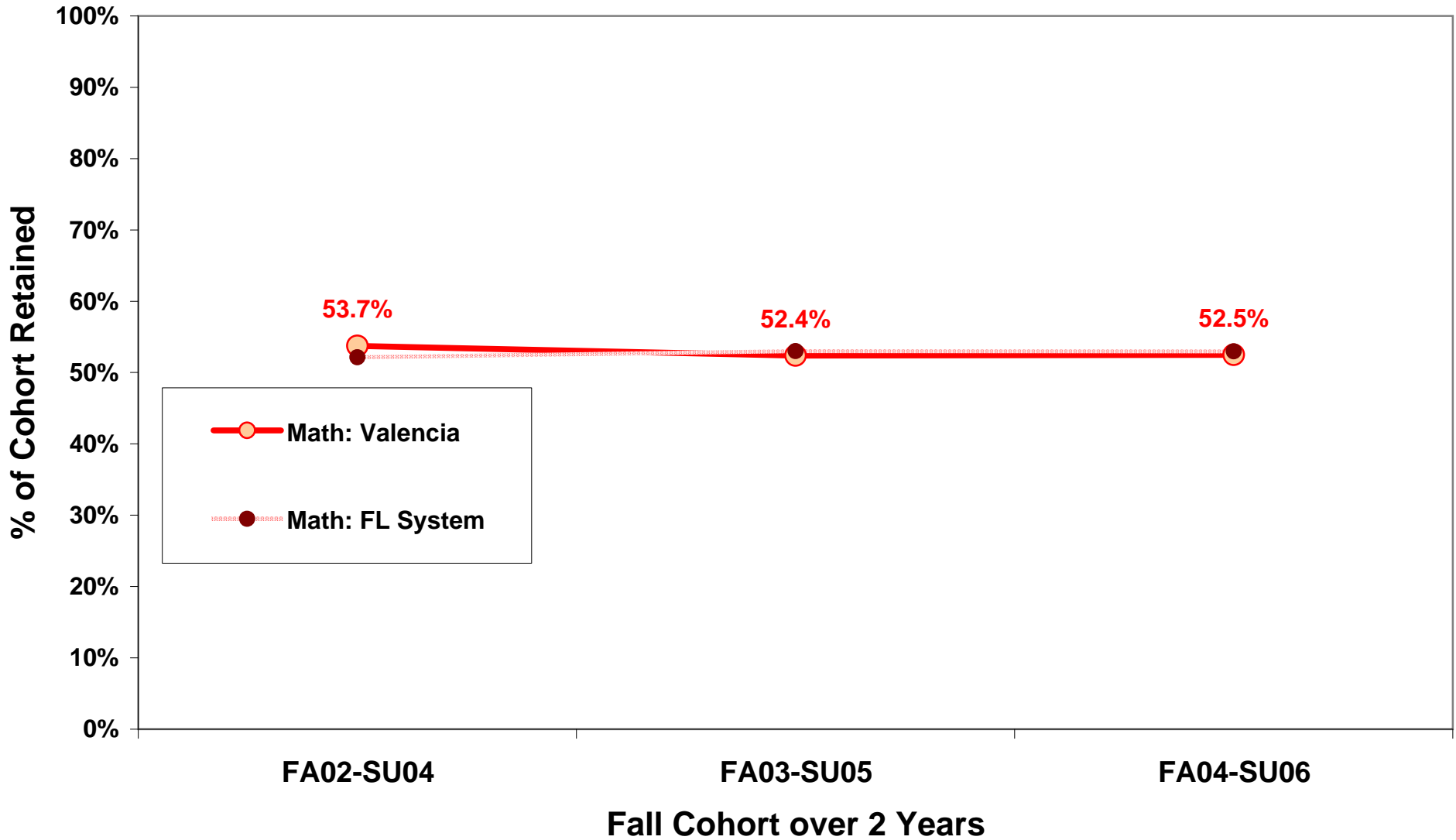
Successful Completion of College Prep: Writing

% Who Completed Their Preparatory Program Within 2 Full Academic Years



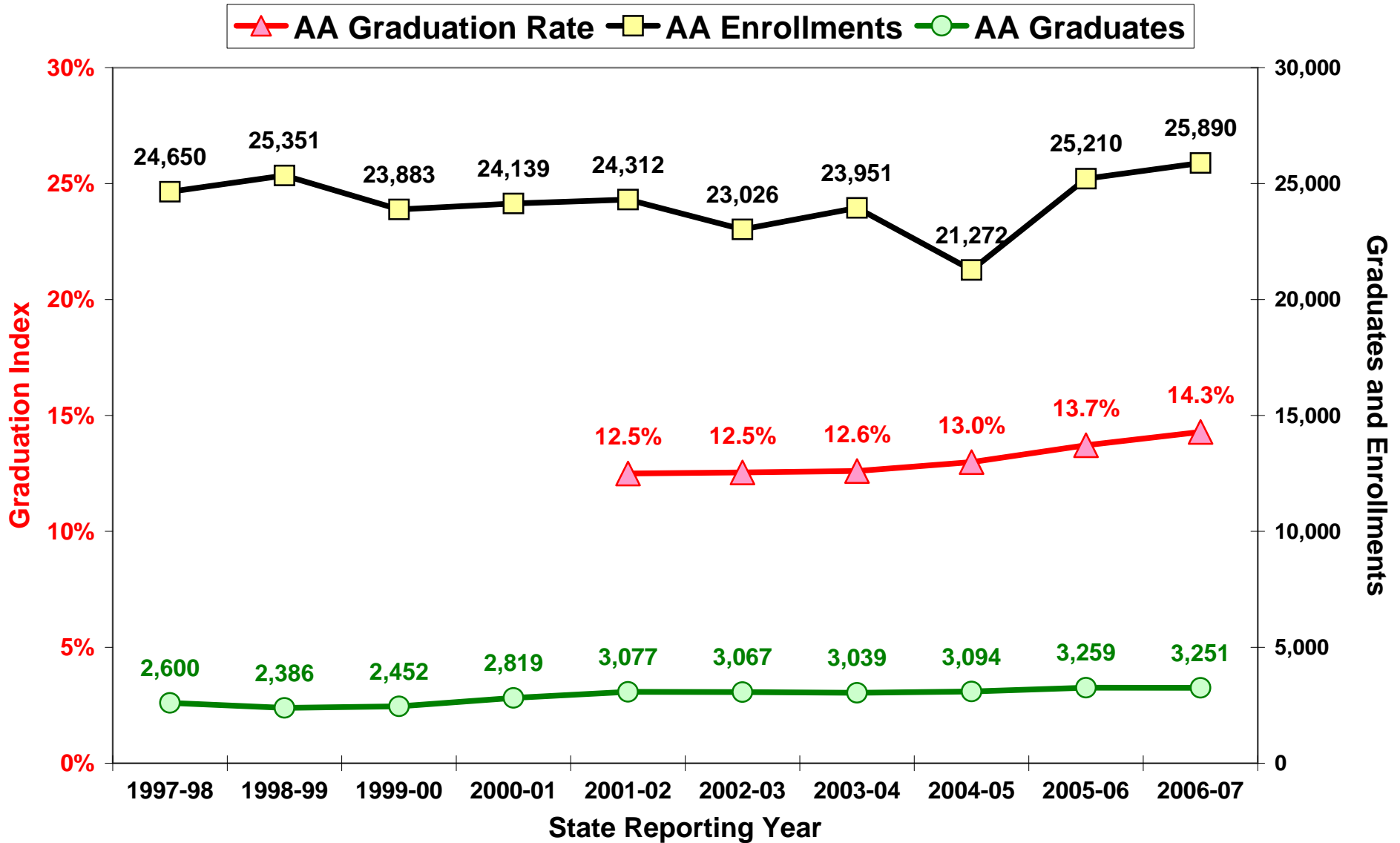
Successful Completion of College Prep: Math

% Who Completed Their Preparatory Program Within 2 Full Academic Years



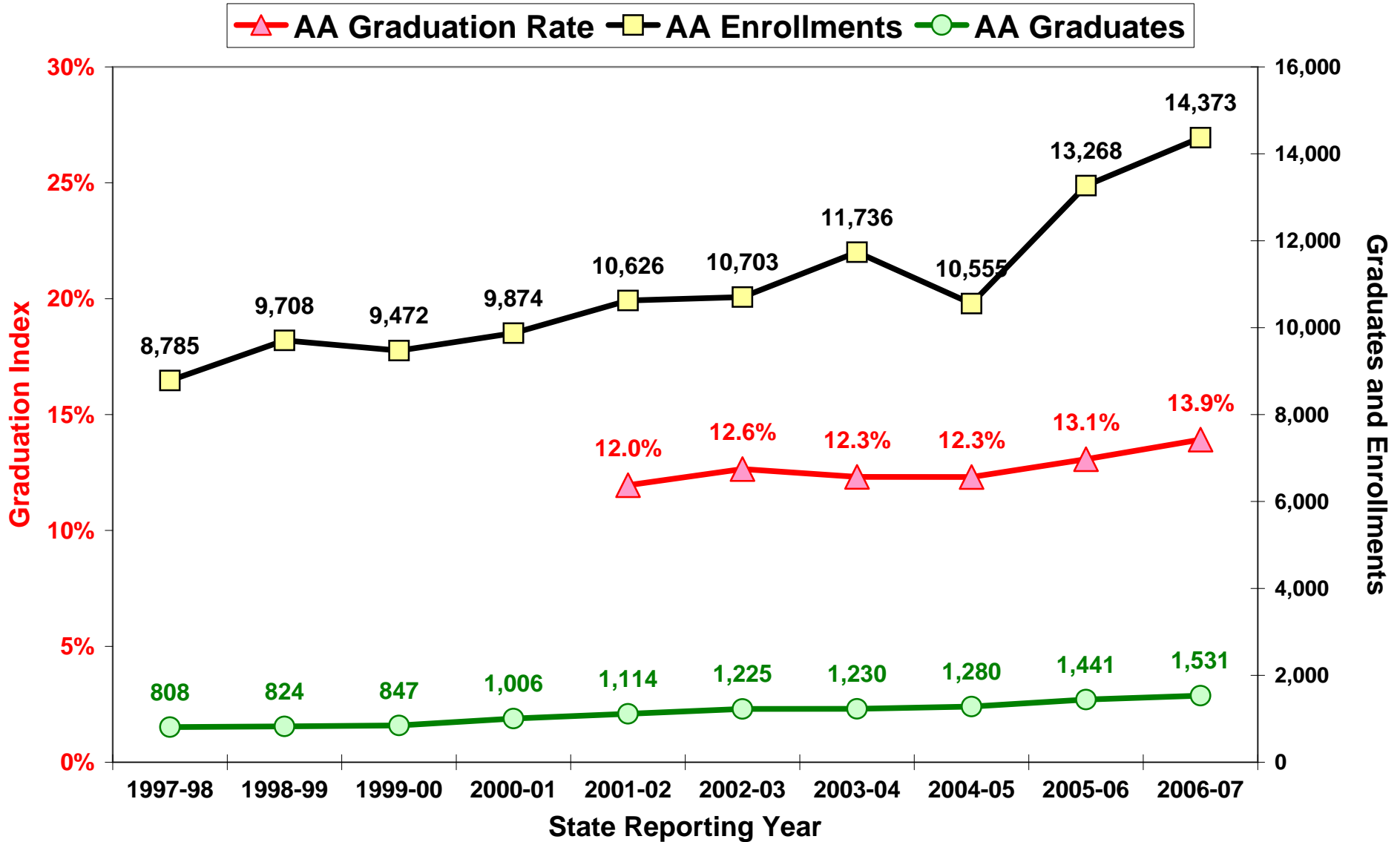
AA Graduation Index

Total Graduates per Average Enrollment (2, 3, & 4 years earlier)



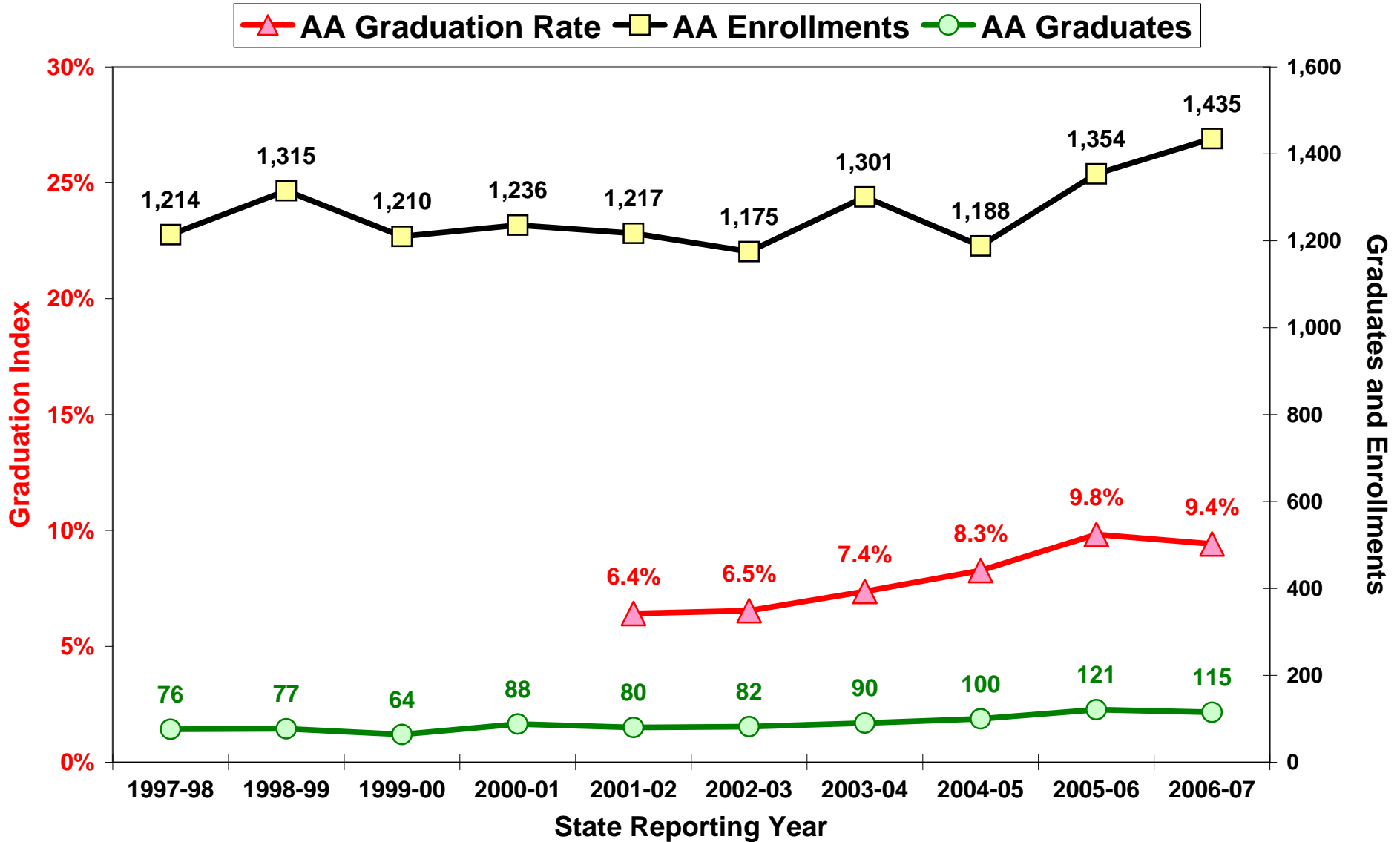
AA Graduation Index: Non-White Students

Total Graduates per Average Enrollment (2, 3, & 4 years earlier)



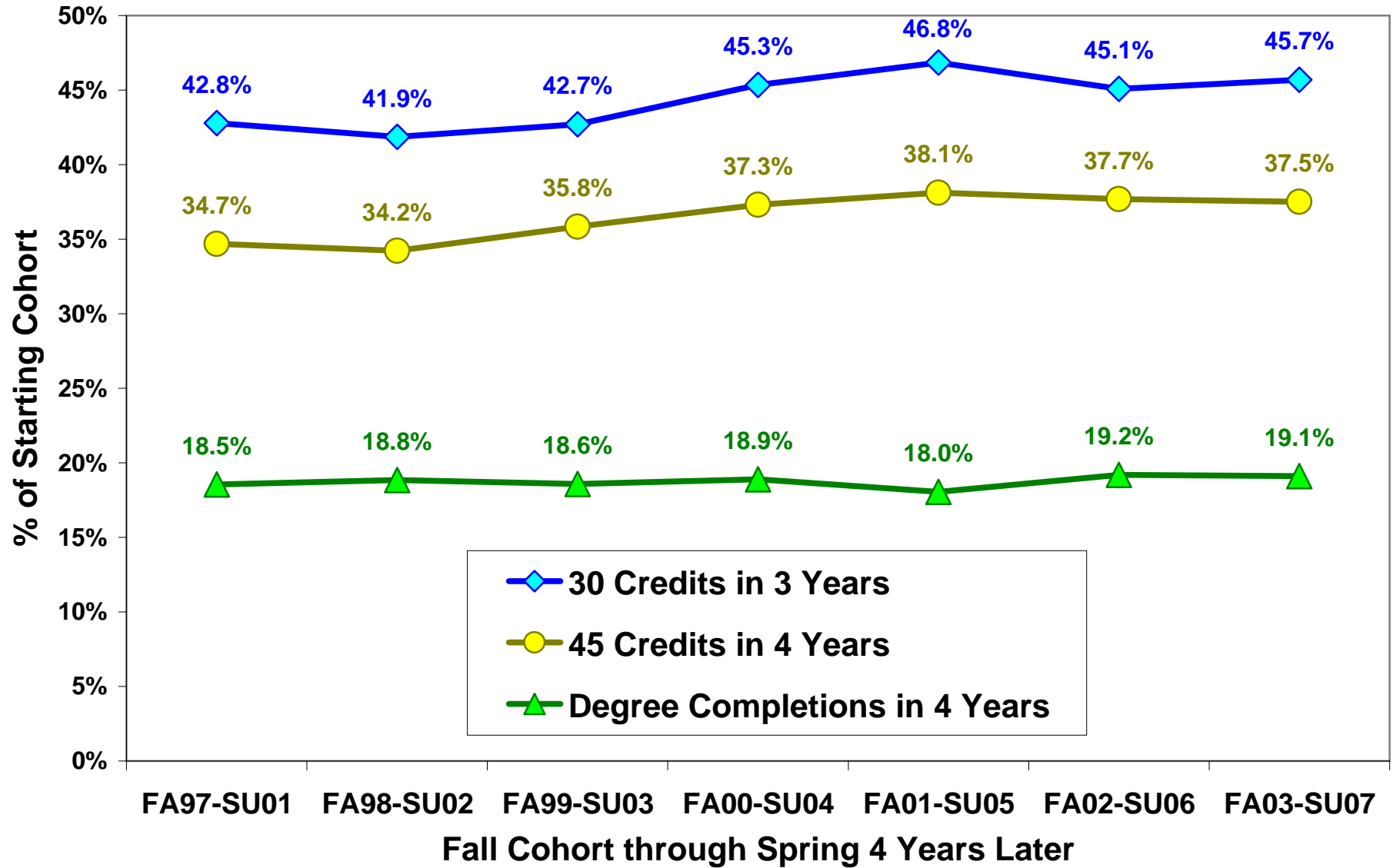
AA Graduation Index: Black Male Students

Total Graduates per Average Enrollment (2, 3, & 4 years earlier)



Cohort Analysis

Fall FTIC Degree-Seekers Tracked over 4 Years

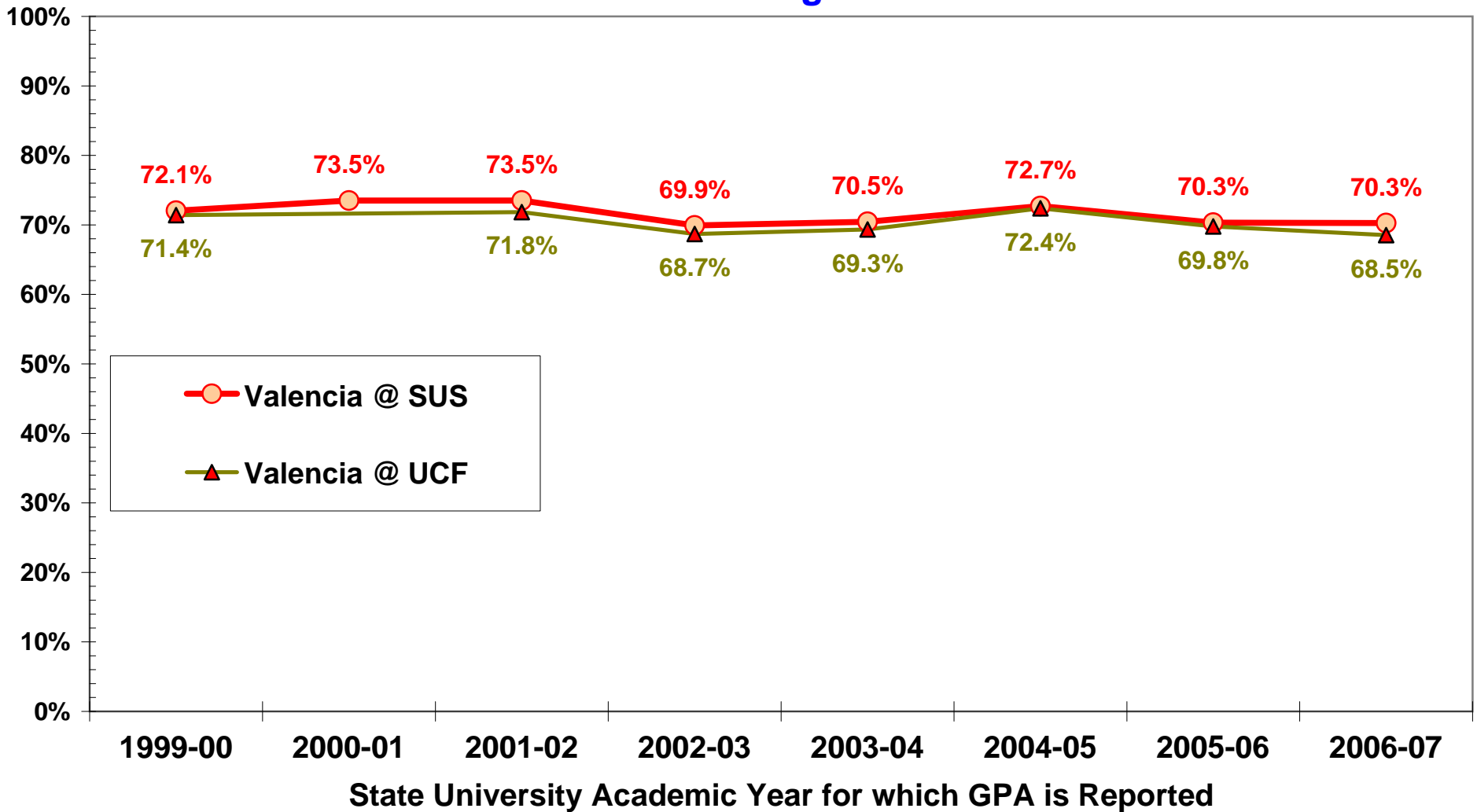


Goal Four: Partner with the Community

Graduate SUS GPA
(or % GPA>2.5)

GPA Performance of AA Degree Transfers to Florida Public Universities

% of Transfers Earning GPA 2.5 & Above



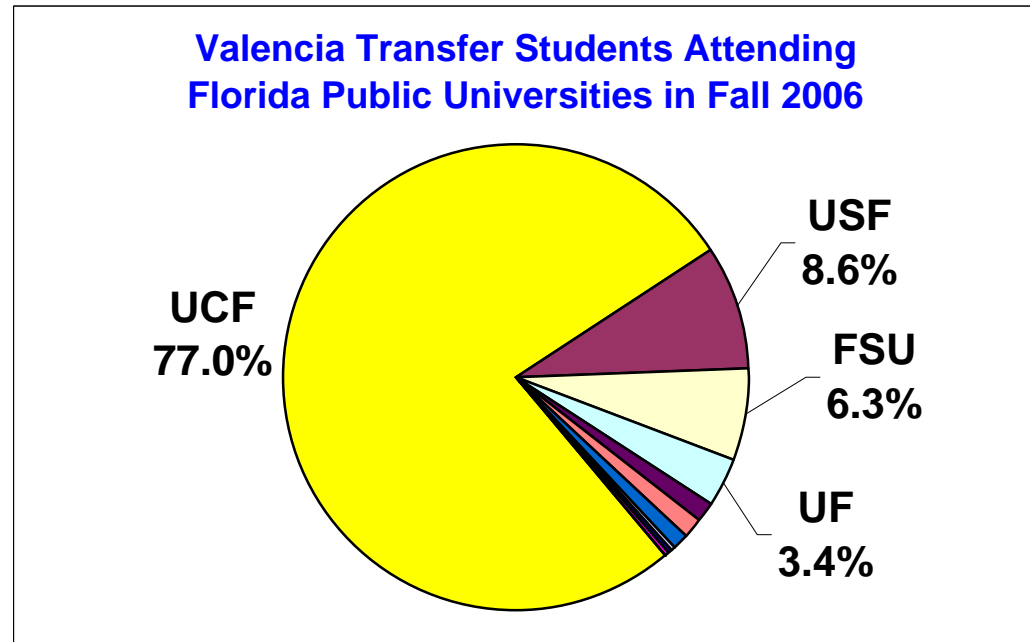
Goal Four: Partner with the Community

Valencia Transfers at FL Public Universities

(includes graduates and non-graduate transfers)

Fall 2006

Florida SUS School	#	%
UCF	6,433	77.0%
USF	716	8.6%
FSU	525	6.3%
UF	280	3.4%
UNF	132	1.6%
FAU	102	1.2%
FIU	90	1.1%
FAMU	31	0.4%
UWF	22	0.3%
FGCU	24	0.3%
NCF	3	0.0%
Total Found in the SUS	8,358	100.0%



Community Colleges Closely Linked to UCF

Fall 2006

Community College	To SUS	UCF %	To UCF	Share
Seminole	2,229	83.0%	1,851	9.4%
Valencia	8,358	77.0%	6,433	32.6%
Daytona Beach	2,165	65.3%	1,413	7.2%
Brevard	4,076	64.9%	2,644	13.4%
All Other FL CCs	68,604	10.8%	7,382	37.4%
Total CC Transfers	85,432	23.1%	19,723	100.0%

